



PRAŽSKÁ
STROJÍRNA a.s.



PLASTOVÉ PRAŽCE

100% Příprava k montáži
100% Recyklované
100% Ekologické



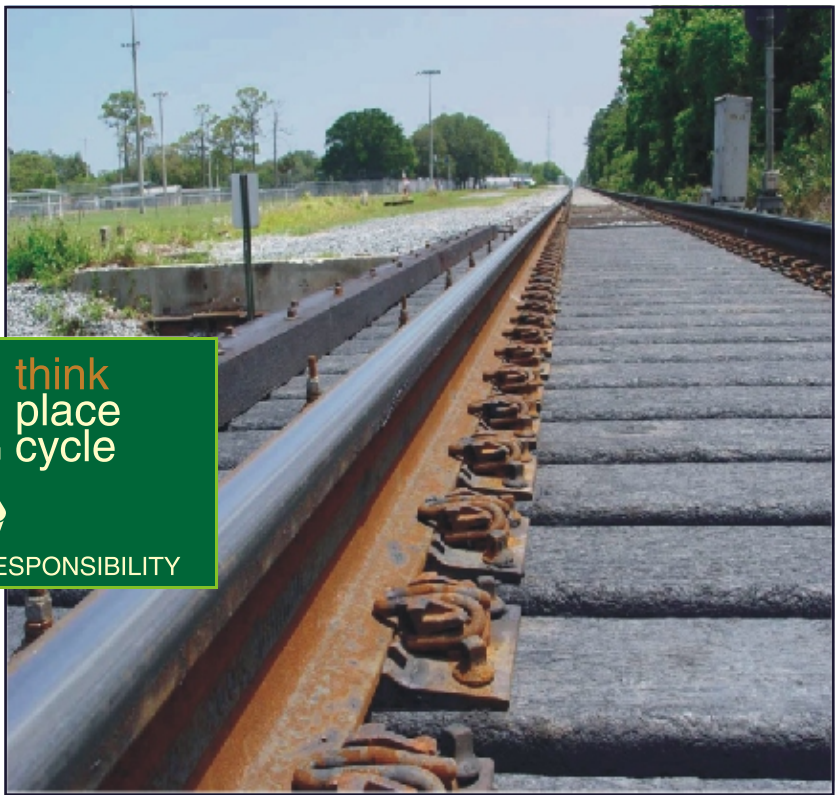
CERTIFICATE NO. 32557



CERTIFICATE NO. 33026

... all for the modern tramway track

Pražská strojírna a.s.
Mladoboleslavská 133
190 17 Praha 9-Vinoř
Tschechische Republik



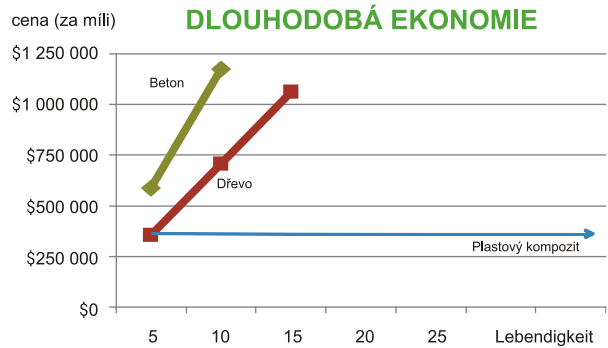
RE think
place
cycle

ENVIRONMENTAL RESPONSIBILITY



Axion Kompozitové pražce pod speciální konstrukcí Toronto TTC Streetcar Březen 2009

Axion kompozitové pražce v Calgary 2010



Summary
Accelerated Weathering Tests – Comparative Analysis
Conducted by Pose-Chow, Ph.D. – University of Illinois – Wood Products Lab

Material	Test Type	Before Exposure	After Exposure	Graph Description
10 400 Composite	Before Exposure	4,200 psi	4,000 psi	Bar chart showing strength retention after exposure.
10 400 Composite	After Exposure	4,200 psi	4,000 psi	Bar chart showing strength retention after exposure.
Face Hardness	Before Exposure	5,000 lb	5,000 lb	Bar chart showing hardness retention after exposure.
Face Hardness	After Exposure	5,000 lb	5,000 lb	Bar chart showing hardness retention after exposure.
Soak Swell in Water	Before Exposure	31.0% Sw	2.20% Sw	Bar chart showing low swelling after exposure.
Soak Swell in Water	After Exposure	31.0% Sw	2.20% Sw	Bar chart showing low swelling after exposure.
Soak Swell in Water	Before Exposure	3.20% Sw	1.70% Sw	Bar chart showing low swelling after exposure.
Soak Swell in Water	After Exposure	3.20% Sw	1.70% Sw	Bar chart showing low swelling after exposure.
Soak Swell in Water	Before Exposure	5,500 lb	2,500 lb	Bar chart showing strength retention after exposure.
Soak Swell in Water	After Exposure	5,500 lb	2,500 lb	Bar chart showing strength retention after exposure.
Soak Swell in Water	Before Exposure	1.8%	1.2%	Bar chart showing low swelling after exposure.
Soak Swell in Water	After Exposure	1.8%	1.2%	Bar chart showing low swelling after exposure.

Pražce z recyklovaného plastového kompozitu

- Patentovaná technologie
- Vyrobeno ze 100% recyklovaného materiálu
- Netoxické
- Nenasákavé
- Nekorodující
- Neinduktivní
- Vysoká životnost
- Standardní postup montáže
- Absorbuje vibrace a huk

Dostupnost

- standardní délka 2600 mm
- kompletní sety pro výhybky



SE, J. W. WILSON
16 83
10000 570

tel.: +420 284 810 852
fax: +420 284 820 493
e-mail: pstroj@pstroj.cz
www.pstroj.cz

... all for the modern tramway track